



H1 - Cast-in Handle

H1 - Cast-in Handle

For precast concrete septic tank covers and "D" box lids.

- Unique design. Needs no rebar.
- Extremely strong, non-corrosive.
- Ribbed construction for added rigidity.

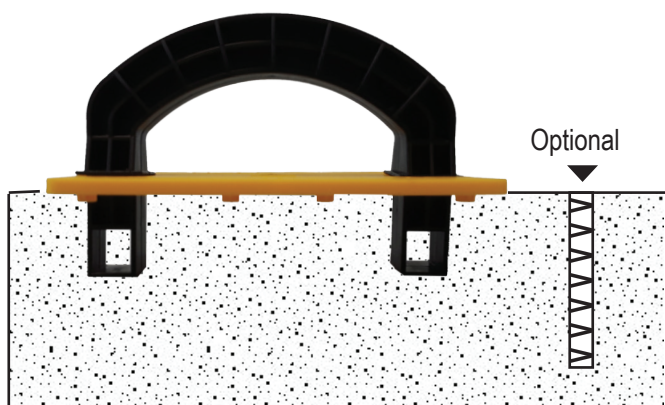
250 per carton



Hand lift only.



Concrete Lid with H1 Handle.
Poured into Tuf-Tite Riser Pan to form.
Also for use in Inspection Lids, "D" box covers and
Well Covers.



No rebar needed for strength

If code requires that a rebar be imbedded for location with a metal detector, a scrap of rebar can be cast in. Rebar must be positioned "vertically" for optimum detection.

Optional Snap-on Warning Placards

Cast-in or snap-on 6" x 3½" yellow placards. Non-corrosive with Warning message molded in.



WP:
"Danger" Placard



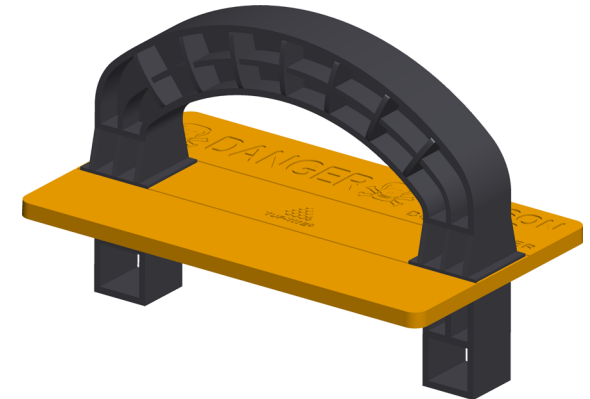
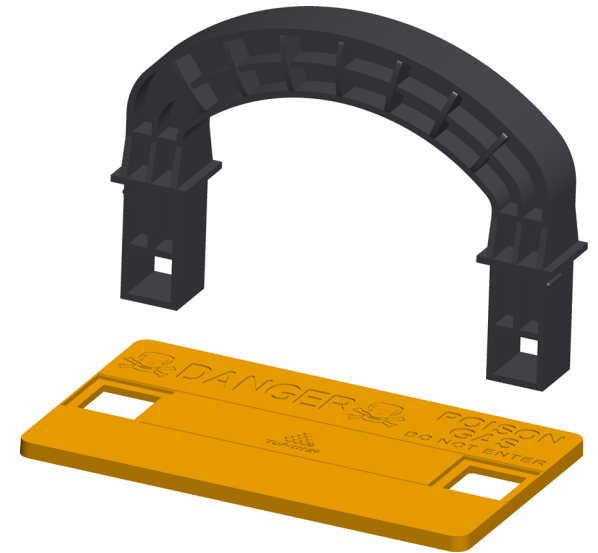
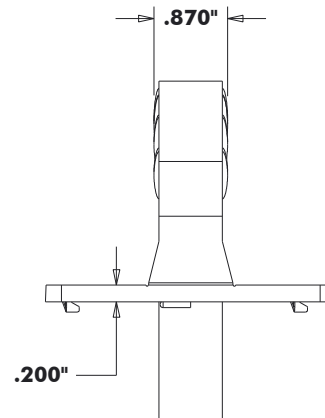
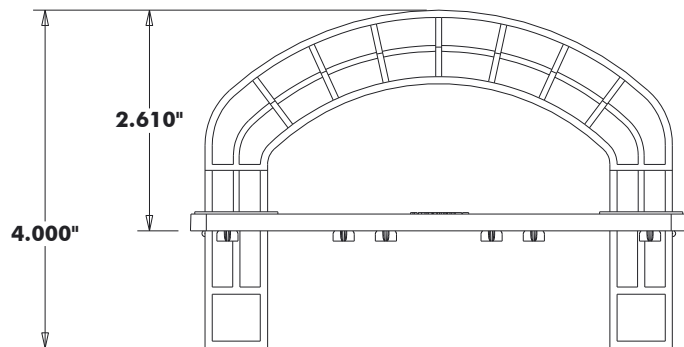
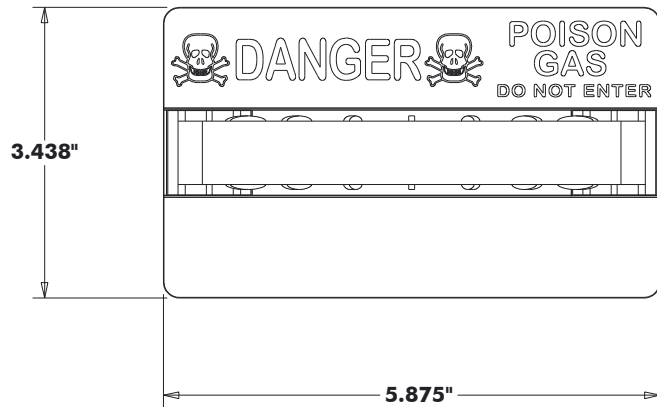
WP-2C:
For Two-Compartment Tank



Drainage and Septic Products

1-800-382-7009

Tuf-Tite® Inc. 1200 Flex Court, Lake Zurich, Illinois 60047 Toll-Free: 1-800-382-7009 or Phone: 847-550-1011 FAX: 847-550-8004



Drainage and Septic Products

Tuf-Tite, Inc.
1200 Flex Court
Lake Zurich, Illinois 60047

TELEPHONE: 847.550.1011
TOLL FREE: 800.382.7009
FAX: 847.550.8004

PART NAME:

H1 - Cast-in Handle

PART #:

H1