



TUF-TITE®

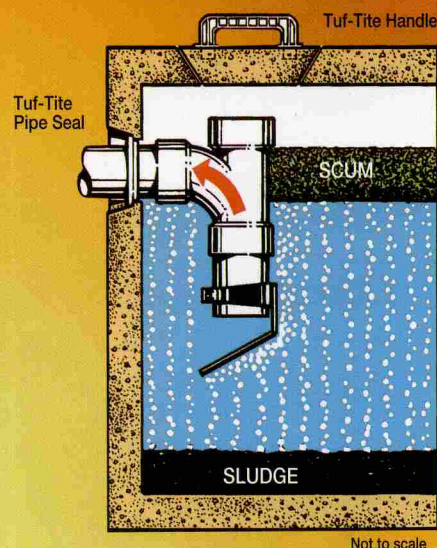
Gas Baffle™



Pat. No. 4,959,145

Tough Problem

Rising gas bubbles carry tiny solid particles through the outlet pipe and into the septic field. Solids belong in the tank, not in the septic field.



TUF-TITE Solution

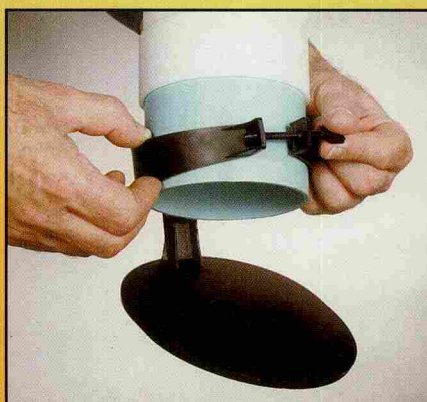
Connect a plastic sanitary tee and a Tuf-Tite Gas Baffle to the outlet pipe. Gas bubbles are deflected away from the tee riser. Solids stay in the tank.

Install It On-Site Quickly, Easily, & Inexpensively.

- No holes to drill
- No inserts to align
- No tracks to clean
- No seals to cast in

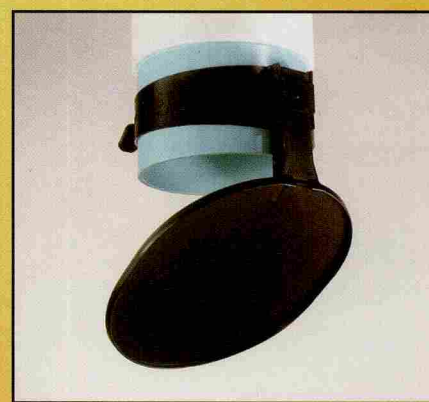
Today's simplest, most effective outlet baffle and gas deflector system.

Tuf-Tite Septic Gas Baffles are self-supported and not dependent on costly, questionable septic tank attachments.



Mounts in seconds

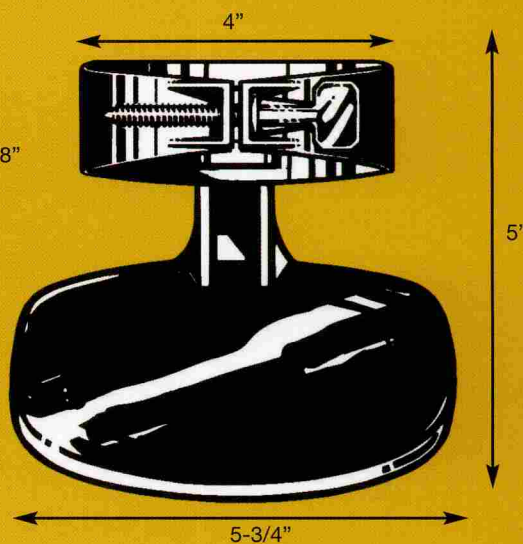
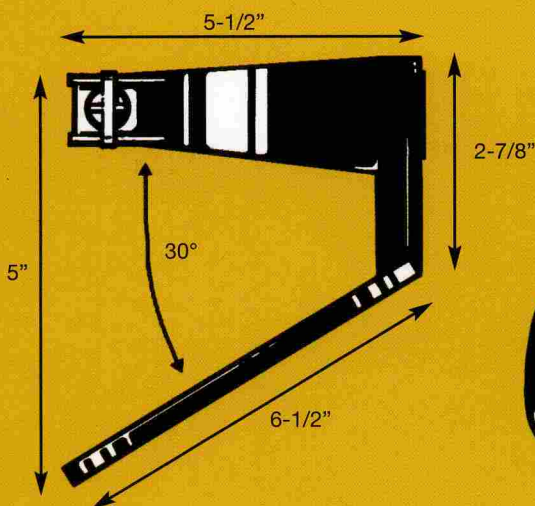
Tuf-Tite Gas Baffles are totally non-corrosive and fit all commonly used 4" pipes. Simply start the self-tapping thumb screw and slip the mounting strap over the tee riser. Align the Gas Baffle so it faces the outlet end of the tank and tighten the screw to lock it in position.



Patented design

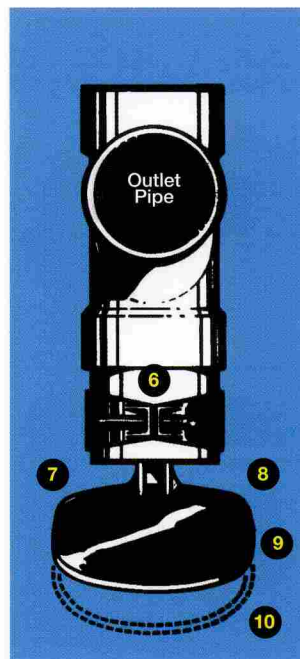
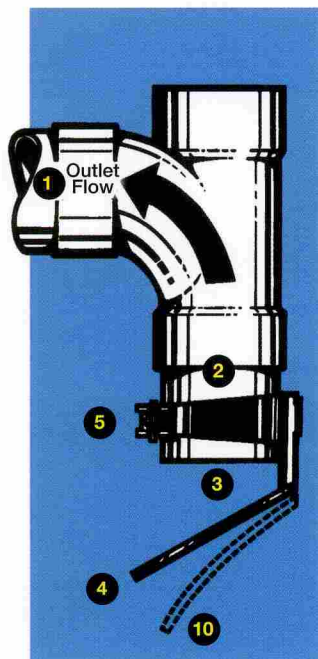
The angled baffle plate stops gas bubbles from entering the tee riser. The underside of the plate is rimmed to trap the rising bubbles and deflect them up the 30° slope. Bubbles are released at the back of the plate and channeled up to the scum level of the septic tank.

- Made of strong, flexible, non-corrosive polypropylene.
- Designed to fit all commonly used 4" pipes.
- Flexible deflector for easy pipe rodding.



COMES COMPLETELY ASSEMBLED, READY FOR EASY ON-SITE INSTALLATION.

- 1 Connect an inexpensive 4" sanitary tee, with an appropriate length of riser pipe, to the septic tank outlet pipe.
- 2 Start the self-tapping thumb screw. Slide the mounting strap over the tee riser and position the Gas Baffle.
- 3 The top of the baffle deflector should be 1/2" below the bottom of the tee riser.
- 4 The Gas Baffle should face the outlet end of the septic tank.
- 5 Tighten the self-tapping thumb screw to lock the Gas Baffle into position.



- 6 The ends of the mounting bracket are reinforced to assure a tight, perfectly aligned fit.
- 7 The rigid support post keeps the baffle precisely centered beneath the tee riser opening.
- 8 The back of the support rod is channeled to direct gas bubbles away from the tee riser.
- 9 The baffle deflector is 33% larger than the tee riser opening. Bubbles are blocked effectively.
- 10 The flexible baffle deflector can be bent downward to provide easy access for rodding.

