



CABINET FOR HUMAN RESOURCES  
COMMONWEALTH OF KENTUCKY

DEPARTMENT FOR HEALTH SERVICES

September 26, 1995

Ted Meyers, President  
Tuf-Tite Corporation  
1125 Old Rand Road  
Wauconda, Illinois 60084

Dear Mr. Meyers:

In response to your letter dated August 31, 1995, for distribution box approvals, the following is offered:

The four hole distribution box cannot be approved as an equal flow box because of its small size. We believe that once a four (4) inch tee has been installed, the discharge point will be directly at the outlet openings, thereby not providing equal flow distribution due to turbulence.

The small six (6) hole box cannot be approved for equal flow distribution since the outlet holes are located two (2) inches off of the inside bottom. Once the tee is installed at one (1) inch off of the bottom, only one (1) inch of effluent will remain. This will not be considered adequate for baffling the effluent for equal flow distribution.

The new seven (7) hole box can be approved for a level box as well as an equal flow box. The inlet tee must extend to one inch off the inside bottom of the box.

The nine (9) hole distribution box can be approved as an equal flow distribution box. As with the seven (7) hole box tee, the tee must extend to one inch off of the inside bottom of the box.

The new component identification numbers are as follows and must be imprinted or stenciled on the inlet end of the device:

9 Hole Equal Flow Box	KY-PE8-0071
7 Hole Equal Flow Box	KY-PE6-0071
7 Hole Level Box	KY-PL6-0071-L

If you should have any questions, please contact me.

Sincerely,

A handwritten signature in cursive script that reads "Wes Combs".

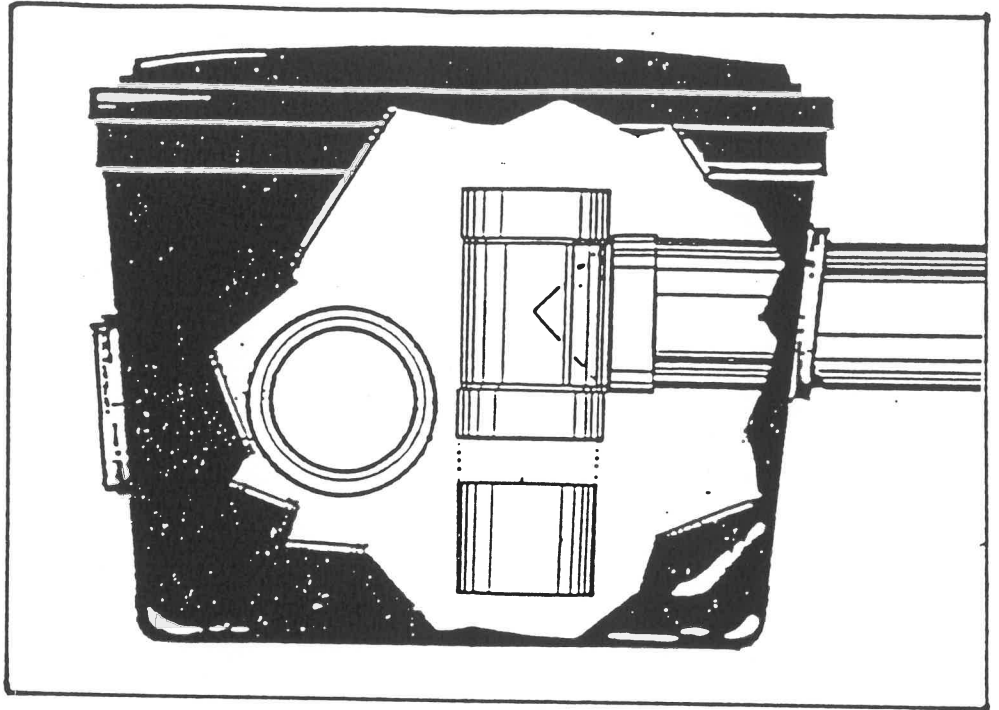
Wes Combs, Technical Consultant  
Environmental Management Branch  
Division of Environmental Health



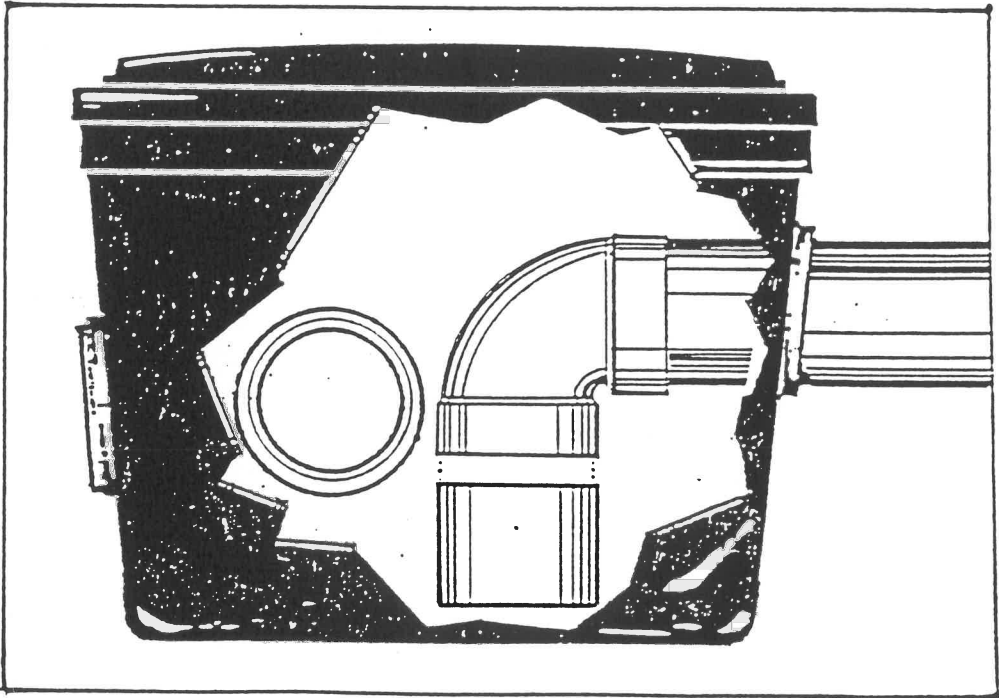
# TUF-TITE

# Drainage and Septic Products

TUF-TITE DISTRIBUTION BOX  
WITH INLET BAFFLE TEE  
(Optional Tee Extension)



TUF-TITE DISTRIBUTION BOX  
WITH INLET BAFFLE ELBOW  
(Optional Elbow Extension)



Both the seven (7) hole distribution box and nine (9) hole distribution box are approved for a level box as well as an equal box. The inlet tee must extend to one inch (1") off the inside bottom of the box.



## TUF-TITE

Drainage and Septic Products